

Physical Specification

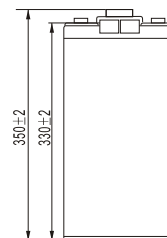
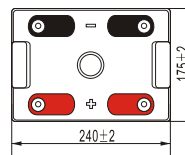
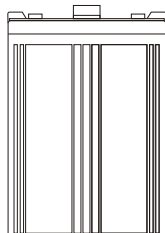
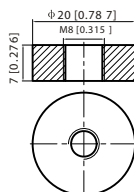
Part Number:	CXL500-2
Length:	240 ± 2 mm (9.45 inches)
Width:	175 ± 2 mm (6.89 inches)
Container Height:	330 ± 2 mm (12.99 inches)
Total Height (with terminal):	350 ± 2 mm (13.78 inches)
Approx Weight:	Approx 30.5 Kg

Specifications

	Nominal Voltage	2V
	Nominal Capacity (10HR)	500AH
Terminal Type	Standard Terminal	T11
	Optional Terminal	-
Container Material	Standard Option	ABS
	Flame Retardant Option (FR)	ABS (UL94:VO)
Rated Capacity	535.0AH/26.8A	(20hr, 1.80V/cell, 25°C / 77°F)
	500.0AH/50.0A	(10hr, 1.80V/cell, 25°C / 77°F)
	435.0 AH/87.0A	(5hr, 1.75V/cell, 25°C / 77°F)
	390.0AH/130.0A	(3hr, 1.75V/cell, 25°C / 77°F)
	310.0 AH/310.0A	(1hr, 1.60V/cell, 25°C / 77°F)
Max Discharge Current	4000A (5s)	
Internal Resistance	Approx 0.6mΩ	
Discharge Characteristics	Operating Temp. Range	Discharge: -15 ~ 50°C (5 ~ 122°F)
		Charge: 0 ~ 40°C (5 ~ 104°F)
		Storage: -15 ~ 40°C (5 ~ 104°F)
	Nominal Operating Temp. Range	25 ± 3°C (77 ± 5°F)
	Cycle Use	Initial Charging Current less than 150.0A. Voltage 2.4V ~ 2.5V at 25°C (77°F) Temp. Coefficient -5mV/°C
	Standby Use	No limit on Initial Charging Current Voltage 2.35V ~ 2.3V at 25°C (77°F) Temp. Coefficient -3mV/°C
	Capacity affected by Temperature	40°C (104°F)
25°C (77°F)		100%
0°C (32°F)		86%
Design Floating Life at 20°C	15 Years	
Self Discharge	Canbat batteries may be stored for up to 6 months at 25°C(77°F) and then a refresh charge is required. For higher temperatures the time interval will be shorter.	

Dimensions

T11 Terminal



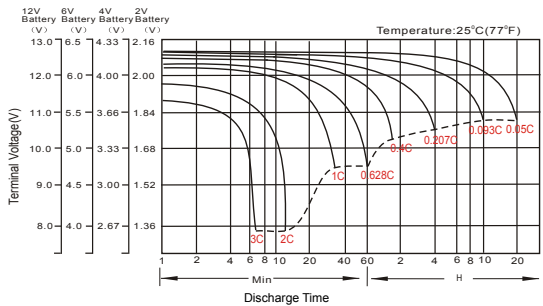
Constant Current Discharge (Amperes) at 25 °C (77°F)

F.V/Time	10min	15min	20min	30min	45min	1h	2h	3h	4h	5h	6h	8h	10h	20h
1.85V/cell	585.0	492.0	436.5	362.0	279.3	239.0	154.8	116.4	95.3	80.2	70.3	56.4	48.5	25.9
1.80V/cell	669.4	552.5	482.6	393.2	301.3	252.3	166.4	125.0	101.3	85.0	74.4	59.3	50.0	26.8
1.75V/cell	760.3	622.7	533.3	427.3	328.7	275.0	173.0	130.0	104.8	87.0	76.8	61.3	51.3	27.4
1.70V/cell	858.6	690.8	588.7	466.5	354.0	291.0	182.3	136.8	109.5	92.0	80.5	63.9	53.3	28.1
1.65V/cell	922.1	739.7	626.3	492.3	374.7	301.0	189.0	142.3	113.8	94.9	83.3	66.0	54.8	29.0
1.60V/cell	\	810.1	680.4	525.3	389.3	310.0	193.8	146.0	116.4	97.2	85.0	67.2	56.0	29.5

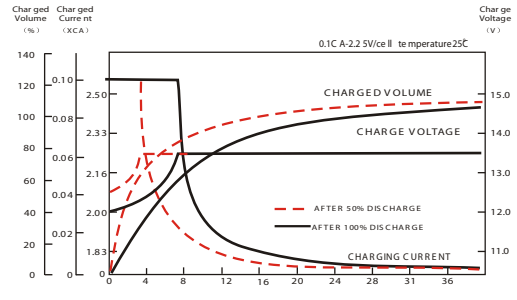
Constant Power Discharge (Watts) at 25 °C (77°F)

F.V/Time	10min	15min	20min	30min	45min	1h	2h	3h	4h	5h	6h	8h	10h	20h
1.85V/cell	1092.3	927.9	831.5	697.2	542.5	465.8	303.6	229.1	188.3	158.8	139.5	112.4	96.9	51.7
1.80V/cell	1235.3	1028.1	906.0	745.8	580.7	489.1	324.2	244.8	199.1	167.6	147.2	117.9	99.8	53.4
1.75V/cell	1380.8	1144.7	991.7	803.8	627.4	530.7	335.9	253.6	205.2	170.9	151.4	121.6	102.4	54.7
1.70V/cell	1524.5	1252.5	1086.6	872.8	673.3	559.8	353.2	266.4	214.0	180.5	158.4	126.6	106.2	56.1
1.65V/cell	1622.3	1330.8	1147.4	913.5	706.2	574.9	364.0	275.9	221.6	185.5	163.4	130.6	109.0	57.8
1.60V/cell	\	1433.8	1233.0	968.1	730.0	589.0	371.5	281.8	225.8	189.4	166.3	132.6	111.1	58.6

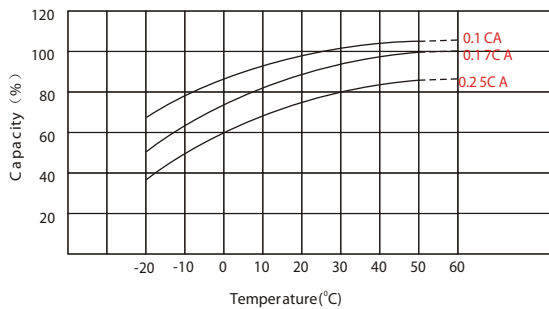
Discharge Characteristics



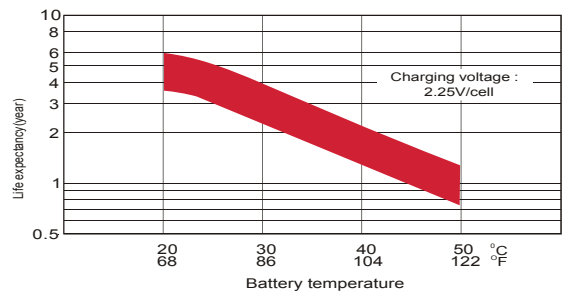
Float Charging Characteristics



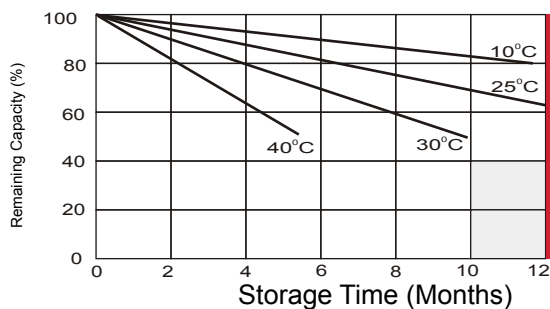
Temperature Effects in Relation to Battery Capacity



Effect of Temperature on Long Term Float Life



Self Discharge Characteristics



A

No supplementary required
(Carryout supplementary charge before use if 100% capacity is required.)

B

Supplementary charge required before use. Optional charging way as below:
 1. Charged for above 3 days at limited current 0.25CA and constant voltage 2.25V/cell.
 2. Charged for above 20 hours at limited current 0.25CA and constant voltage 2.25V/cell.
 3. Charged for 8 ~ 10 hours at limited current 0.05 CA.

C

Supplementary charge may often fail to recover the capacity.
The battery should never be left standing till this is reached.

ALL DATA IS SUBJECT TO CHANGE WITHOUT NOTICE