

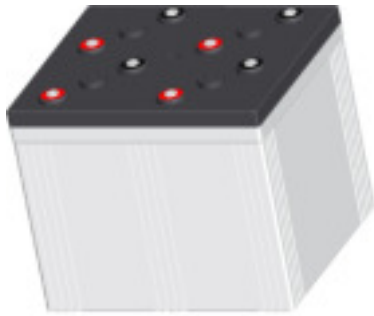
CXL 2000-2

2V 2000AH

Extended Life



CXL2000-2



Physical Specification

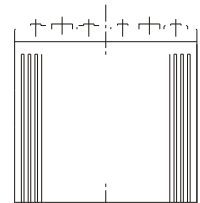
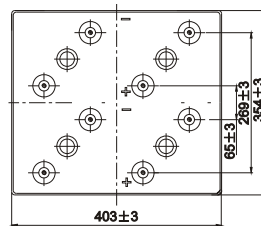
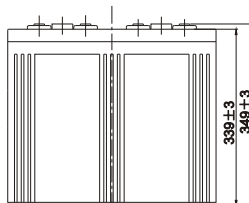
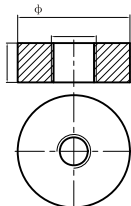
Part Number:	CXL2000-2
Length:	490 ± 3 mm (19.29 inches)
Width:	350 ± 3 mm (13.78 inches)
Container Height:	339 ± 3 mm (13.35 inches)
Total Height (with terminal):	349 ± 3 mm (13.74 inches)
Approx Weight:	Approx 120.5 Kg

Specifications

	Nominal Voltage	2V	
	Nominal Capacity (10HR)	2000AH	
Terminal Type	Standard Terminal	T11	
	Optional Terminal	-	
Container Material	Standard Option	ABS	
	Flame Retardant Option (FR)	ABS (UL94:VO)	
Rated Capacity	2140.0 AH/107.0A	(20hr, 1.80V/cell, 25°C / 77°F)	
	2000.0 AH/200.0A	(10hr, 1.80V/cell, 25°C / 77°F)	
	1740.0 AH/348.0A	(5hr, 1.75V/cell, 25°C / 77°F)	
	1512.0 AH/504.0A	(3hr, 1.75V/cell, 25°C / 77°F)	
	1214.0 AH/1214.0A	(1hr, 1.60V/cell, 25°C / 77°F)	
Max Discharge Current	16000A (5s)		
Internal Resistance	Approx 0.28mΩ		
Discharge Characteristics	Operating Temp. Range	Discharge: -15 ~ 50°C (5 ~ 122°F)	
		Charge: 0 ~ 40°C (5 ~ 104°F)	
		Storage: -15 ~ 40°C (5 ~ 104°F)	
	Nominal Operating Temp. Range	25 ± 3°C (77 ± 5°F)	
	Cycle Use	Initial Charging Current less than 600.0A. Voltage 2.4V ~ 2.5V at 25°C (77°F) Temp. Coefficient -5mV/°C	
	Standby Use	No limit on Initial Charging Current Voltage 2.25V ~ 2.3V at 25°C (77°F) Temp. Coefficient -3mV/°C	
Capacity affected by Temperature	40°C (104°F)	103%	
	25°C (77°F)	100%	
	0°C (32°F)	86%	
Design Floating Life at 20°C	15 Years		
Self Discharge	Canbat batteries may be stored for up to 6 months at 25°C(77°F) and then a refresh charge is required. For higher temperatures the time interval will be shorter.		

Dimensions

T11 Terminal



ALL DATA IS SUBJECT TO CHANGE WITHOUT NOTICE

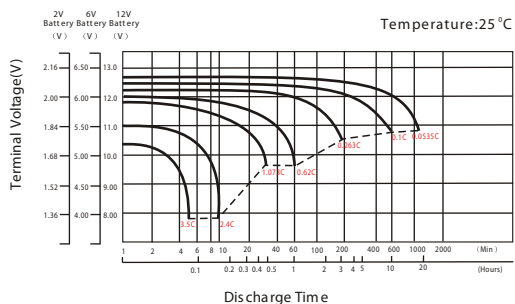
Constant Current Discharge (Amperes) at 25 °C (77°F)

F.V/Time	30min	45min	1h	2h	3h	4h	5h	6h	8h	10h	20h
1.85V/cell	1533.6	1216.0	998.0	599.5	463.3	380.5	324.0	283.0	228.0	191.0	101.3
1.80V/cell	1645.5	1279.3	1060.0	632.4	486.0	397.5	337.6	295.7	236.8	200.0	105.0
1.75V/cell	1742.5	1345.2	1106.0	658.6	504.0	411.0	348.0	302.7	241.3	202.0	106.1
1.70V/cell	1828.4	1395.9	1144.7	678.0	517.3	420.0	354.0	308.0	245.0	204.0	107.1
1.65V/cell	1917.9	1456.7	1186.0	698.4	528.7	429.0	361.6	313.3	248.5	206.6	108.5
1.60V/cell	/	1496.0	1214.0	715.0	540.0	435.0	366.8	317.7	251.8	209.0	109.7

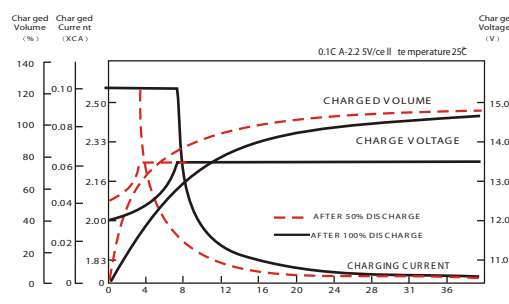
Constant Power Discharge (Watts) at 25 °C (77°F)

F.V/Time	30min	45min	1h	2h	3h	4h	5h	6h	8h	10h	20h
1.85V/cell	2930.8	2338.0	1930.4	1166.0	905.5	746.3	638.3	559.2	452.4	379.9	201.7
1.80V/cell	3119.4	2443.5	2038.9	1224.3	945.3	777.0	662.1	581.9	468.4	397.2	208.7
1.75V/cell	3278.2	2554.3	2118.0	1269.9	977.8	800.6	680.2	593.8	476.2	400.7	210.6
1.70V/cell	3410.8	2632.0	2180.6	1301.8	999.9	814.8	689.9	603.4	483.1	404.4	212.5
1.65V/cell	3551.2	2731.3	2246.4	1335.3	1017.3	829.5	702.2	611.9	488.8	408.9	215.0
1.60V/cell	/	2778.8	2283.5	1358.5	1033.7	837.4	709.5	618.5	494.2	412.9	217.1

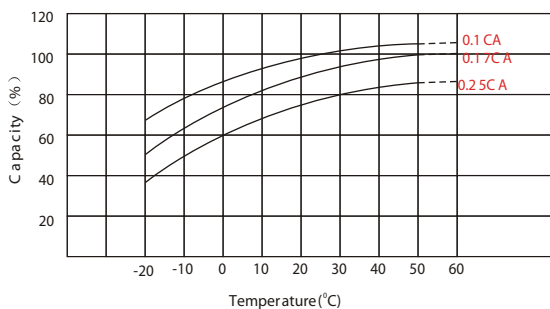
Discharge Characteristics



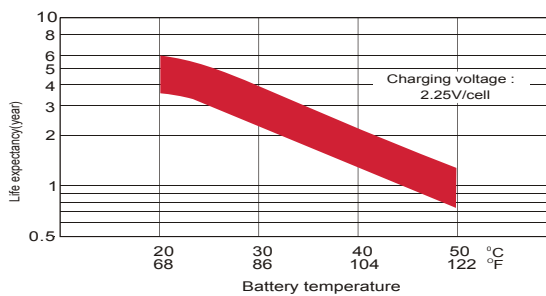
Float Charging Characteristics



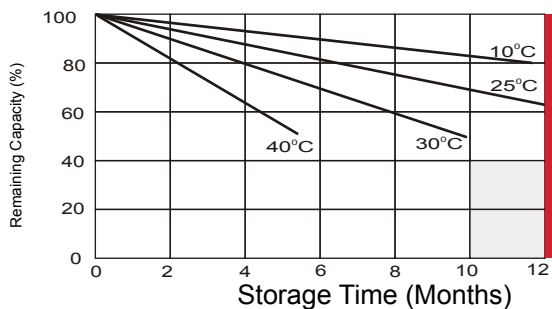
Temperature Effects in Relation to Battery Capacity



Effect of Temperature on Long Term Float Life



Self Discharge Characteristics



A

No supplementary required
(Carryout supplementary charge before use if 100% capacity is required.)

B

Supplementary charge required before use. Optional charging way as below:
 1. Charged for above 3 days at limited current 0.25CA and constant voltage 2.25V/cell.
 2. Charged for above 20 hours at limited current 0.25CA and constant voltage 2.25V/cell.
 3. Charged for 8 ~ 10 hours at limited current 0.05 CA.

C

Supplementary charge may often fail to recover the capacity.
The battery should never be left standing till this is reached.

ALL DATA IS SUBJECT TO CHANGE WITHOUT NOTICE