

CLI21-24

24V 21AH

Lithium Iron Phosphate Battery - LiFePO₄

CANBAT 

CLI21-24



Physical Specification

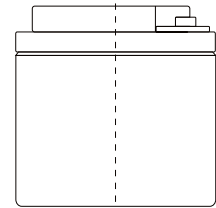
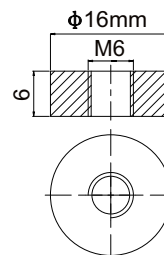
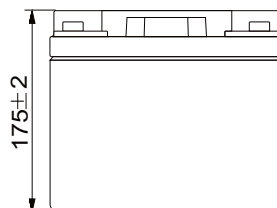
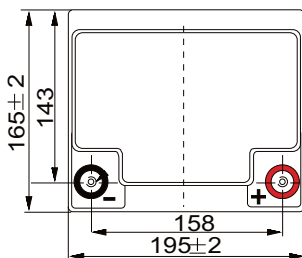
Part Number:	CLI21-24
Width:	195 ± 2 mm (7.68 inches)
Depth:	165 ± 2 mm (6.50 inches)
Container Height:	175 ± 2 mm (6.89 inches)
Approx Weight:	5.92kg (13.051lbs)

Specifications

Electrical Characteristics	Nominal Voltage	25.6V
	Nominal Capacity	21AH
	Energy	537.6Wh
	Internal Resistance (AC)	50mΩ
	Cycle Life	3000+ cycles @ 1C 100%DOD
	Monthly Self Discharge	Less than 3%
	Efficiency of Charge	100% @0.5C
	Efficiency of Discharge	96~99% @1C
Standard Charge	Charge Voltage	29.2±0.2V
	Charge Mode	0.2C to 29.2V, then 29.2V,charge current to 0.02C (CC/CV)
	Charge Current	4A
	Max. Charge Current	10A
	Charge Cut-off Voltage	29.2V±0.2V
Standard Discharge	Continuous Current	10A
	Max. Pulse Current	15A (Less than 3s)
	Discharge Cut-off Voltage	20V
Environmental	Charge Temperature	0°C to 55°C (32°F to 131°F) @ 60±25% Relative Humidity
	Discharge Temperature	-20°C to 60°C (-4°F to 140°F) @ 60±25% Relative Humidity
	Storage Temperature	-20°C to 45°C (-4°F to 113°F) @ 60±25% Relative Humidity
	IP Class	IP65

Dimensions

M6 Terminal



Model: CLI21-24
Voltage: 25.6V

Capacity: 21Ah
Energy: 537.6Wh

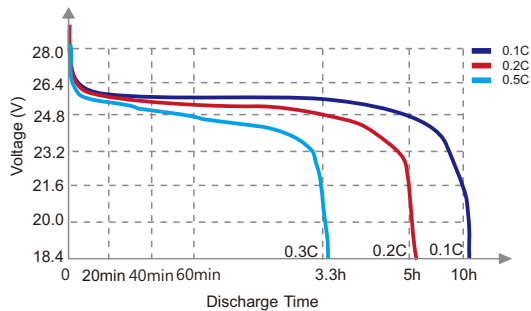
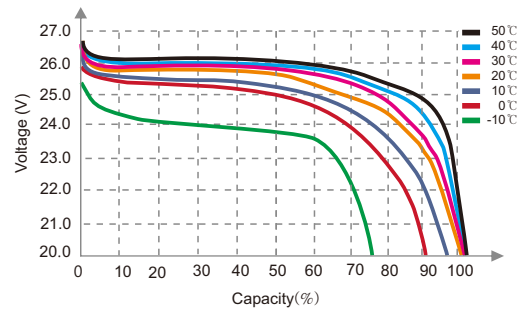
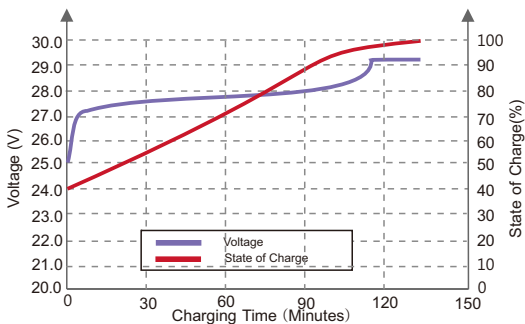
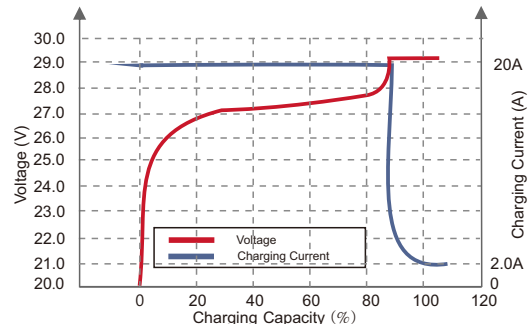
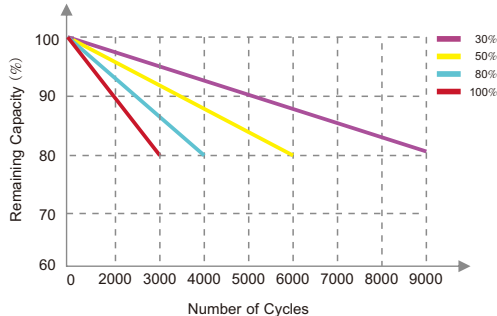
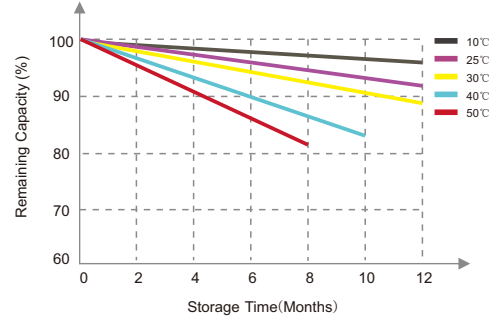
www.canbat.com

UN38.3

CE



To ensure safe and efficient operation always refer to the latest edition of our datasheets, as published on our website www.canbat.com. Canbat Technologies Inc. All rights reserved. All trademarks are the property of their respective owners. All data subject to change without notice. E&O.E

CLI21-24**24V 21AH****Lithium Iron Phosphate****CANBAT****Different Rate Discharge Curve (25°C)****Different Temperature Discharge Curve (0.5C)****State of Charge Curve (0.5C, 25°C)****Charging Characteristics (0.5C, 25°C)****Different DOD Discharge Cycle Life Curve****Different Temperature Self Discharge Curve****Features of Lithium Iron Phosphate LiFePO4 Batteries****MINIMAL SELF-DISCHARGE**

Less than 2% self-discharge per month, which means more power when you need it.

**FASTER CHARGING**

Charges much faster than conventional sealed lead-acid batteries, giving you access to reliable power quicker.

**EASY INSTALLATION**

Canbat lithium iron phosphate batteries are designed to be drop-in replacement for sealed lead-acid batteries.

**HIGH DISCHARGE RATE**

Ability to deeply discharge the battery at a high rate of discharge while maintaining a high energy capacity.

**ENVIRONMENTALLY FRIENDLY**

Toxic-free and acid-free, which makes them environmentally friendly and you can install them in any direction.

**MORE USABLE CAPACITY**

Lithium iron phosphate batteries provide up to 100% of usable energy, which means you can discharge the battery entirely.

**LIGHT WEIGHT**

Lithium batteries are 60% lighter than sealed lead acid batteries, making installing and moving the batteries easier and faster.

Model: CLI21-24
Voltage: 25.6V

Capacity: 21Ah
Energy: 537.6Wh

www.canbat.com



UN38.3

