

# CLI200-12

12V 200AH

Lithium Iron Phosphate Battery - LiFePO4



## CLI200-12



## Physical Specification

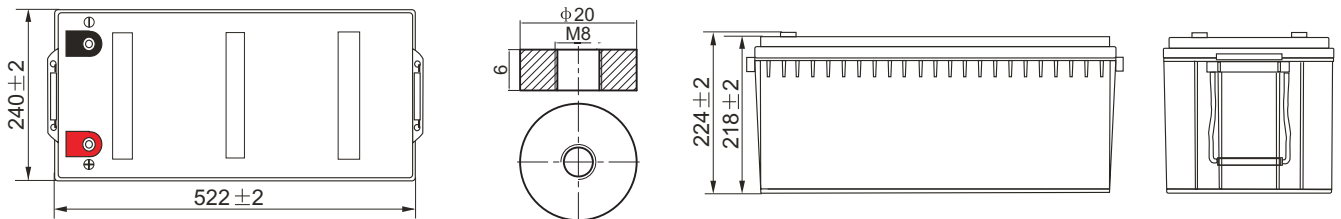
Part Number:	CLI200-12
Width:	522 ± 2 mm (20.55inches)
Depth:	240 ± 2 mm (9.45inches)
Container Height:	224 ± 2 mm (8.81inches)
Approx Weight:	29.60 kgs (65.26 lbs)

## Specifications

Electrical Characteristics	Nominal Voltage	12.8V
	Nominal Capacity	200AH @ 0.2C
	Energy	2560Wh
	Internal Resistance (AC)	20mΩ
	Cycle Life	2500+ cycles @ 1C 100%DOD
	Monthly Self Discharge	Less than 3%
	Efficiency of Charge	100% @0.5C
	Efficiency of Discharge	96~99% @1C
Standard Charge	Charge Voltage	14.6±0.2V
	Charge Mode	0.2C to 14.6V, then 14.6V,charge current to 0.02C (CC/CV)
	Charge Current	60A
	Max. Charge Current	120A
	Charge Cut-off Voltage	14.6V±0.2V
Standard Discharge	Continuous Current	120A
	Max. Pulse Current	140A (Less than 3s)
	Discharge Cut-off Voltage	8V
Environmental	Charge Temperature	0°C to 55°C (32°F to 131°F) @ 60±25% Relative Humidity
	Discharge Temperature	-20°C to 60°C (-4°F to 140°F) @ 60±25% Relative Humidity
	Storage Temperature	-20°C to 45°C (-4°F to 113°F) @ 60±25% Relative Humidity
	IP Class	IP65

## Dimensions

M8 Terminal



Model: CLI200-12  
Voltage: 12.8V

Capacity: 200Ah  
Energy:2560Wh

[www.canbat.com](http://www.canbat.com)

UN38.3



To ensure safe and efficient operation always refer to the latest edition of our datasheets, as published on our website [www.canbat.com](http://www.canbat.com). Canbat Technologies Inc. All rights reserved. All trademarks are the property of their respective owners. All data subject to change without notice. E&O.E

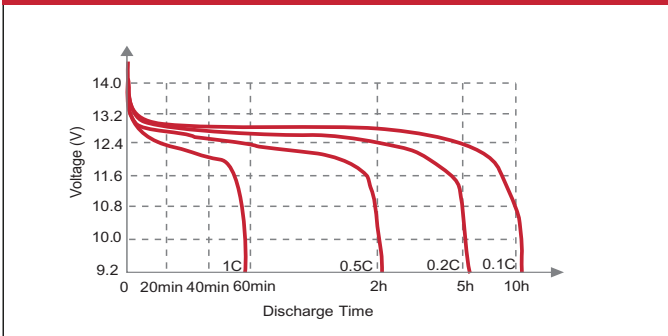
# CLI200-12

12V 200AH

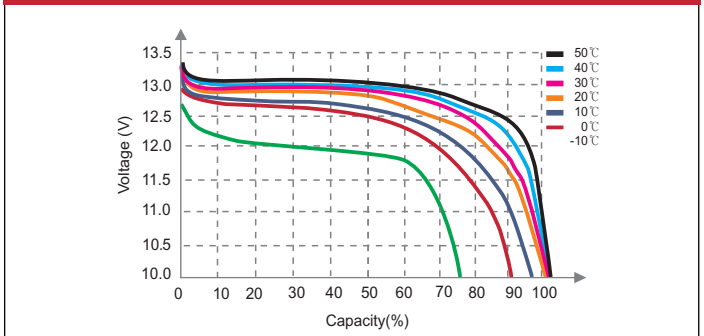
Lithium Iron Phosphate



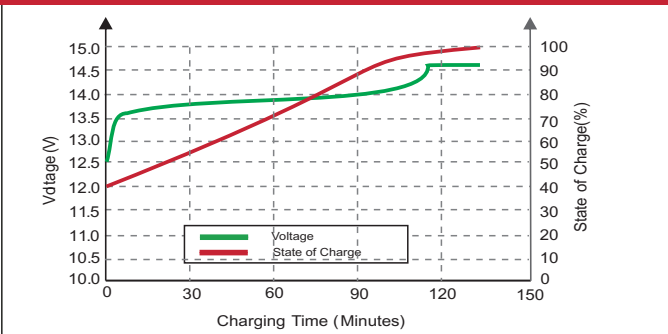
### Different Rate Discharge Curve (25°C)



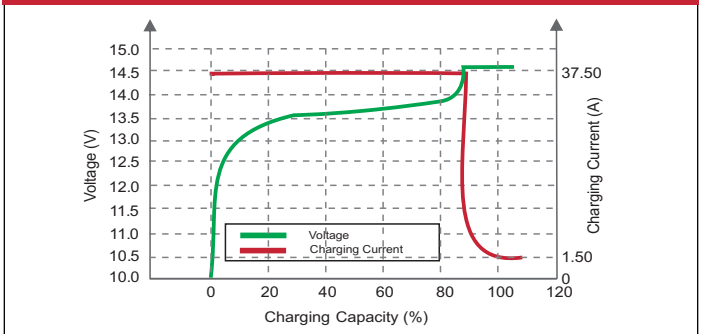
### Different Temperature Discharge Curve (0.5C)



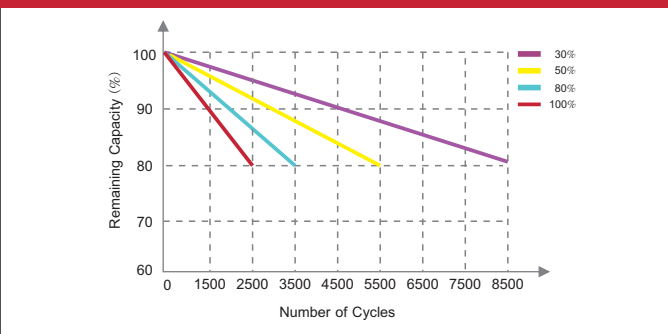
### State of Charge Curve (0.5C, 25°C)



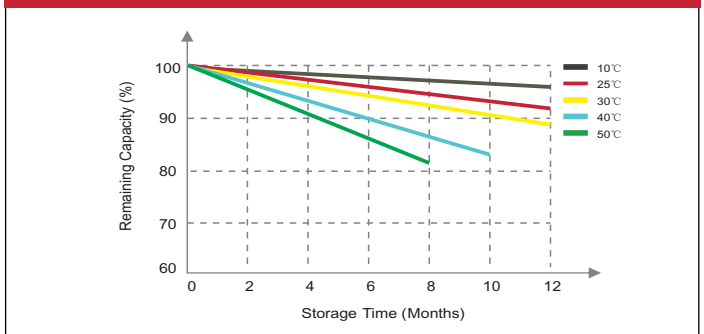
### Charging Characteristics (0.5C, 25°C)



### Different DOD Discharge Cycle Life Curve



### Different Temperature Self Discharge Curve



## Features of Lithium Iron Phosphate LiFePO4 Batteries



#### MINIMAL SELF-DISCHARGE

Less than 2% self-discharge per month, which means more power when you need it.



#### FASTER CHARGING

Charges much faster than conventional sealed lead-acid batteries, giving you access to reliable power quicker.



#### EASY INSTALLATION

Canbat lithium iron phosphate batteries are designed to be drop-in replacement for sealed lead-acid batteries.



#### HIGH DISCHARGE RATE

Ability to deeply discharge the battery at a high rate of discharge while maintaining a high energy capacity.



#### ENVIRONMENTALLY FRIENDLY

Toxic-free and acid-free, which makes them environmentally friendly and you can install them in any direction.



#### MORE USABLE CAPACITY

Lithium iron phosphate batteries provide up to 100% of usable energy, which means you can discharge the battery entirely.



#### LIGHT WEIGHT

Lithium batteries are 60% lighter than sealed lead acid batteries, making installing and moving the batteries easier and faster.