

# CLI130-24

## 24V 130AH

### Lithium Iron Phosphate Battery - LiFePO4

# CANBAT

## CLI130-24



## Physical Specification

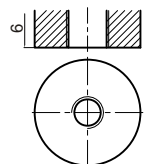
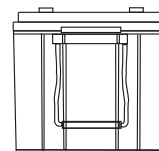
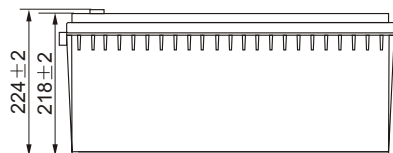
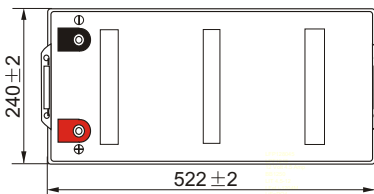
Part Number:	CLI130-24
Width:	522 ± 2 mm (20.55 inches)
Depth:	240 ± 2 mm (9.45 inches)
Container Height:	224 ± 2 mm (8.81 inches)
Approx Weight:	34.20kg (75.3987lbs)

## Specifications

Electrical Characteristics	Nominal Voltage	25.6V
	Nominal Capacity	130AH
	Energy	3328Wh
	Internal Resistance (AC)	20mΩ
	Cycle Life	3000+ cycles @ 1C 100%DOD
	Monthly Self Discharge	Less than 3%
	Efficiency of Charge	100% @0.5C
	Efficiency of Discharge	96~99% @1C
Standard Charge	Charge Voltage	29.2±0.2V
	Charge Mode	0.2C to 29.2V, then 29.2V,charge current to 0.02C (CC/CV)
	Charge Current	40A
	Max. Charge Current	60A
	Charge Cut-off Voltage	29.2V±0.2V
Standard Discharge	Continuous Current	40A
	Max. Pulse Current	60A (Less than 3s)
	Discharge Cut-off Voltage	20V
Environmental	Charge Temperature	0°C to 55°C (32°F to 131°F) @ 60±25% Relative Humidity
	Discharge Temperature	-20°C to 60°C (-4°F to 140°F) @ 60±25% Relative Humidity
	Storage Temperature	-20°C to 45°C (-4°F to 113°F) @ 60±25% Relative Humidity
	IP Class	IP65

## Dimensions

### M8 Terminal



Model: CLI130-24  
Voltage: 25.6V

Capacity: 130Ah  
Energy: 3328Wh

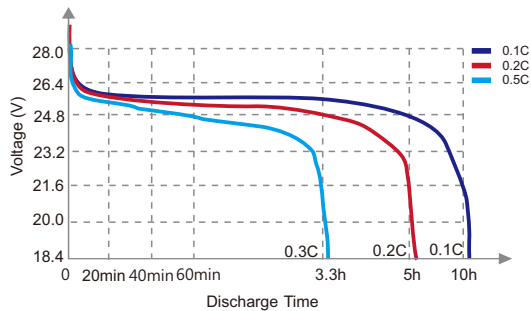
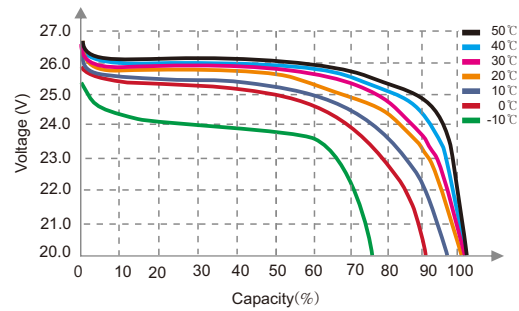
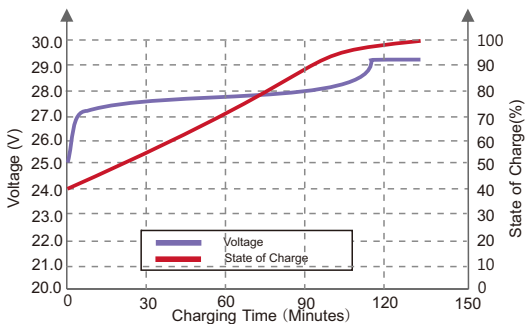
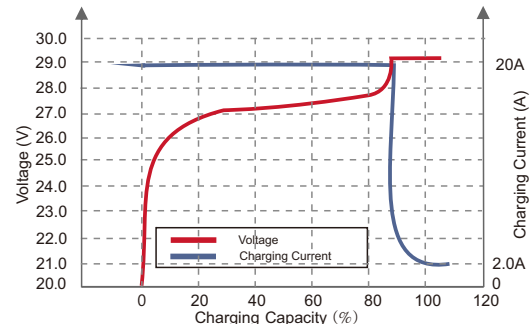
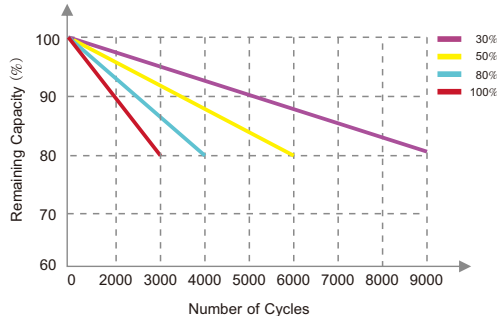
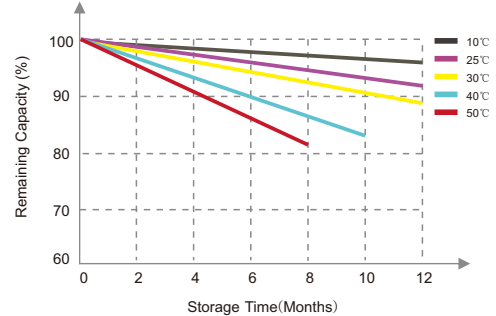
[www.canbat.com](http://www.canbat.com)

UN38.3

CE



To ensure safe and efficient operation always refer to the latest edition of our datasheets, as published on our website [www.canbat.com](http://www.canbat.com). Canbat Technologies Inc. All rights reserved. All trademarks are the property of their respective owners. All data subject to change without notice. E&O.E

**CLI130-24****24V 130AH****Lithium Iron Phosphate****CANBAT****Different Rate Discharge Curve (25°C)****Different Temperature Discharge Curve (0.5C)****State of Charge Curve (0.5C, 25°C)****Charging Characteristics (0.5C, 25°C)****Different DOD Discharge Cycle Life Curve****Different Temperature Self Discharge Curve****Features of Lithium Iron Phosphate LiFePO4 Batteries****MINIMAL SELF-DISCHARGE**

Less than 2% self-discharge per month, which means more power when you need it.

**FASTER CHARGING**

Charges much faster than conventional sealed lead-acid batteries, giving you access to reliable power quicker.

**EASY INSTALLATION**

Canbat lithium iron phosphate batteries are designed to be drop-in replacement for sealed lead-acid batteries.

**HIGH DISCHARGE RATE**

Ability to deeply discharge the battery at a high rate of discharge while maintaining a high energy capacity.

**ENVIRONMENTALLY FRIENDLY**

Toxic-free and acid-free, which makes them environmentally friendly and you can install them in any direction.

**MORE USABLE CAPACITY**

Lithium iron phosphate batteries provide up to 100% of usable energy, which means you can discharge the battery entirely.

**LIGHT WEIGHT**

Lithium batteries are 60% lighter than sealed lead acid batteries, making installing and moving the batteries easier and faster.

Model: CLI130-24  
Voltage: 25.6V

Capacity: 130Ah  
Energy: 3328Wh

[www.canbat.com](http://www.canbat.com)

UN38.3

