



**CBL 2500-2**

Awaiting Image

**Physical Specification**

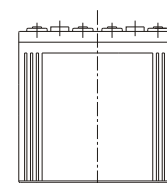
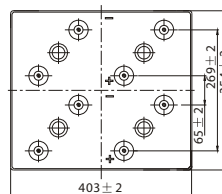
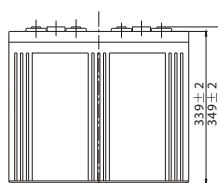
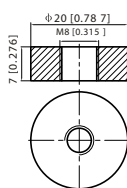
Part Number:	<b>CBL2500-2</b>
Length:	<b>490 ± 2 mm (19.29 inches)</b>
Width:	<b>350 ± 2 mm (13.78 inches)</b>
Container Height:	<b>339 ± 2 mm (13.35 inches)</b>
Total Height (with terminal):	<b>349 ± 2 mm (13.74 inches)</b>
Approx Weight:	<b>Approx 132.0kg (291.1 lbs)</b>

**Specifications**

	Normal Voltage	2V
	Normal Capacity (20HR)	2500AH
<b>Terminal Type</b>	Standard Terminal	T11
	Optional Terminal	-
<b>Container Material</b>	Standard Option	ABS
	Flame Retardant Option (FR)	UL94:VO
<b>Rated Capacity</b>	2626.0 AH/131.3A	(20hr, 1.80V/cell, 25°C / 77°F)
	2500.0 AH/250.0A	(10hr, 1.80V/cell, 25°C / 77°F)
	2137.5 AH/427.5A	(5hr, 1.75V/cell, 25°C / 77°F)
	1875.0 AH/625.0A	(3hr, 1.75V/cell, 25°C / 77°F)
	1500.0 AH/1500.0A	(1hr, 1.60V/cell, 25°C / 77°F)
<b>Max Discharge Current</b>	20000A (5s)	
<b>Internal Resistance</b>	Approx 0.25mΩ	
<b>Discharge Characteristics</b>	Operating Temp. Range	Discharge: -15 ~ 50°C (5 ~ 122°F)
		Charge: 0 ~ 40°C (5 ~ 104°F)
		Storage: -15 ~ 40°C (5 ~ 104°F)
	Nominal Operating Temp. Range	25 ± 3°C (77 ± 5°F)
	Cycle Use	Initial Charging Current less than 750.0A. Voltage 2.4V ~ 2.5V at 25°C (77°F) Temp. Coefficient -5mV/°C
	Standby Use	No limit on Initial Charging Current Voltage 2.25V ~ 2.3V at 25°C (77°F) Temp. Coefficient -3mV/°C
	Capacity affected by Temperature	40°C (104°F) 103%
25°C (77°F) 100%		
0°C (32°F) 86%		
<b>Design Floating Life at 20°C</b>	10 Years	
<b>Self Discharge</b>	Canbat batteries may be stored for up to 6 months at 25°C(77F) and then a refresh charge is required. For higher temperatures the time interval will be shorter.	

**Dimensions**

**T11 Terminal**



ALL DATA IS SUBJECT TO CHANGE WITHOUT NOTICE

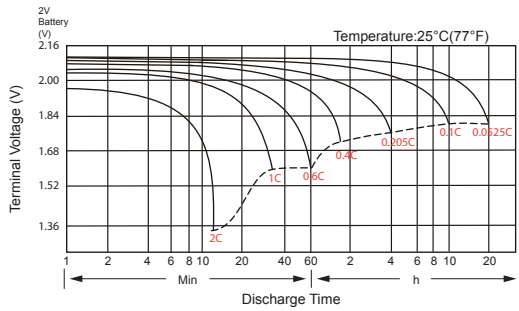
### Constant Current Discharge (Amperes) at 25°C (77°F)

F.V/Time	30 min	45 min	1h	2h	3h	4h	5h	6h	8h	10h	20h
1.85V/cell	1671.3	1357.4	1108.0	742.5	567.5	457.5	391.7	344.6	297.4	238.8	126.6
1.80V/cell	1836.4	1459.9	1180.3	781.3	615.0	473.1	407.5	359.2	292.8	250.0	131.3
1.75V/cell	\	1580.2	1270.1	828.8	625.0	499.4	427.5	376.3	300.3	255.0	132.9
1.70V/cell	\	1687.9	1344.5	875.0	652.5	520.0	444.8	389.6	310.0	261.3	135.8
1.65V/cell	\	1754.5	1397.1	903.8	673.3	535.6	457.0	396.7	315.6	265.5	138.0
1.60V/cell	\	1897.8	1500.0	948.8	701.3	558.1	478.2	414.2	327.5	274.0	142.3

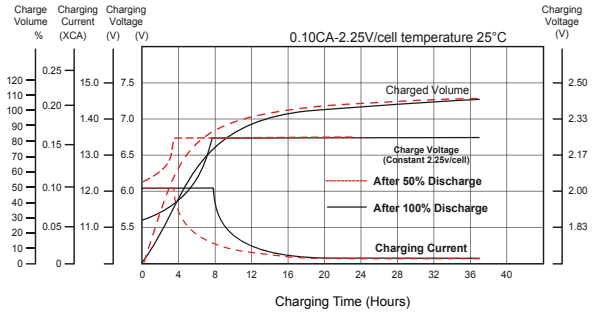
### Constant Power Discharge (Watts) at 25°C (77°F)

F.V/Time	30 min	45 min	1h	2h	3h	4h	5h	6h	8h	10h	20h
1.85V/cell	3202.1	2622.7	2148.3	1449.4	1111.9	899.1	771.8	680.9	554.4	474.9	252.1
1.80V/cell	3464.8	2798.8	2276.3	1514.8	1198.1	924.8	799.2	706.8	579.3	496.5	260.9
1.75V/cell	\	3000.7	2438.3	1601.0	1212.9	972.8	835.6	738.2	592.8	505.8	264.0
1.70V/cell	\	3193.5	2573.0	1686.8	1263.9	1011.0	867.9	763.2	611.3	517.8	269.4
1.65V/cell	\	3289.6	2654.4	1732.1	1298.7	1037.5	888.7	774.7	620.8	525.4	273.6
1.60V/cell	\	3539.4	2835.0	1809.6	1347.2	1077.7	926.9	806.4	642.9	541.3	281.5

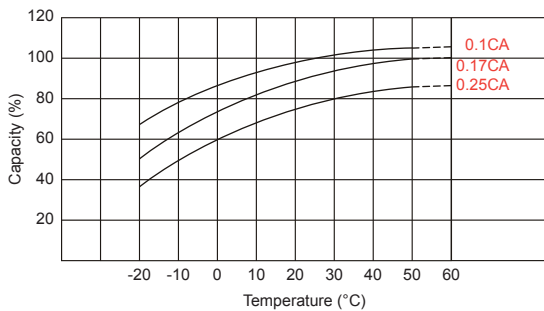
### Discharge Characteristics



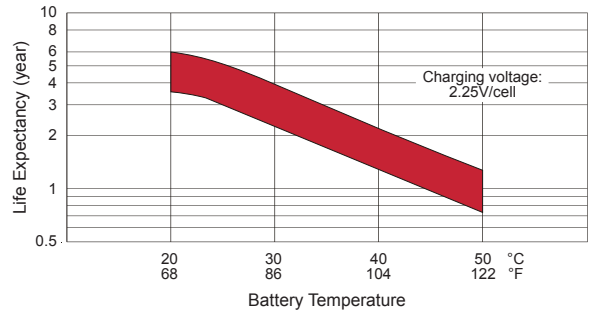
### Float Charging Characteristics



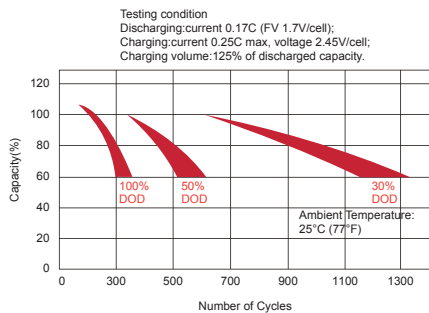
### Temperature Effects in Relation to Battery Capacity



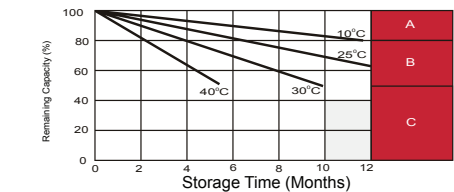
### Effect of Temperature on Long Term Float Life



### Cycle Life in Relation to Depth of Discharge



### Self Discharge Characteristics



- A** No supplementary required (Carryout supplementary charge before use if 100% capacity is required.)
- B** Supplementary charge required before use. Optional charging way as below:  
1. Charged for above 3 days at limited current 0.25CA and constant voltage 2.25V/cell.  
2. Charged for above 20 hours at limited current 0.25CA and constant voltage 2.25V/cell.  
3. Charged for 8 - 10 hours at limited current 0.05 CA.
- C** Supplementary charge may often fail to recover the capacity. The battery should never be left standing till this is reached.

ALL DATA IS SUBJECT TO CHANGE WITHOUT NOTICE