

# CBG96-12

12V 96AH

Deep Cycle Gel Battery



## CBG96-12



## Physical Specification

Part Number:	<b>CBG96-12</b>
Length:	<b>330 ± 2 mm ( 12.99 inches)</b>
Width: Container	<b>173 ± 2 mm ( 6.81 inches)</b>
Height:	<b>212 ± 2 mm ( 8.35 inches)</b>
Total Height (with terminal):	<b>218 ± 2 mm ( 8.58 inches)</b>
Approx Weight:	<b>31.0 kg (68.4lbs)</b>

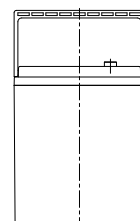
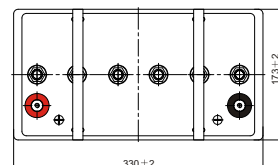
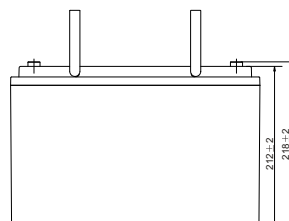
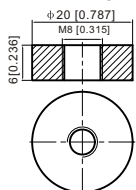
## Specifications

	Nominal Voltage	12V	
	(C10, 1.80V/cell)	96AH	
<b>Terminal Option</b>	T11		
<b>Container Material</b>	Standard Option	ABS	
	Flame Retardant Option (FR)	ABS (UL94:VO)	
<b>Rated Capacity</b>	(20hr, 4.80A, 1.80V/cell)	96.0 Ah	
	(10hr, 9.0A, 1.75V/cell)	90.0 Ah	
	(5hr, 16.0A, 1.75V/cell)	80.0 Ah	
	(3hr, 23.2A, 1.75V/cell)	69.6 Ah	
	(1hr, 55.0A, 1.67V/cell)	55.0 Ah	
<b>Max Discharge Current (5s)</b>	1000 A		
<b>Internal Resistance</b>	Approx. 5.9mΩ		
<b>Discharge Characteristics</b>	Operating Temp. Range	Discharge: -20°C~55°C (-4°F~131°F)	
		Charge: 0°C~40°C (32°F~104°F)	
		Storage: -20°C~50°C (5°F~122°F)	
	Nominal Operating Temp. Range	25 ± 3°C (77 ± 5°F)	
	Cycle Use	Initial Charging Current less than 24.0A. Voltage 14.4V~15.0V at 25°C (77°F) Temp.Coefficient -30mV°C	
	Standby Use	No limit on Initial Charging Current Voltage 13.5V~13.8V at 25°C (77°F)Temp. Coefficient -20mV°C	
	Capacity affected by Temperature	40°C (104°F)	103%
		25°C (77°F)	100%
0°C (32°F)		86%	
<b>Design Floating Life at 20°C</b>	20 Years		
<b>Self Discharge</b>	Canbat Deep Cycle Gel batteries may be stored for up to 9 months at 25°C (77°F) and then a refresh charge is required. For higher temperatures the time interval will be shorter. Self-discharge is less than 2%		

## Dimensions

### T11 Terminal

Unit: mm [inches]



To ensure safe and efficient operation always refer to the latest edition of our datasheets, as published on our website [www.canbat.com](http://www.canbat.com). Canbat Technologies Inc. All rights reserved. All trademarks are the property of their respective owners. All data subject to change without notice. E&O.E

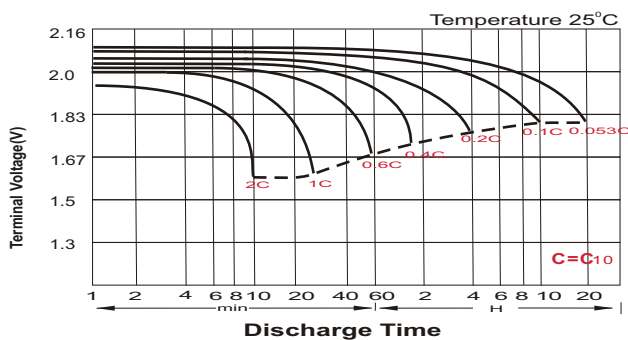
### Constant Current Discharge (Amperes) at 25 °C (77°F)

F.V/Time	20min	30min	45min	1h	2h	3h	4h	5h	6h	7h	8h	9h	10h	20h
1.85V/cell	84.6	66.4	50.7	42.4	26.9	20.5	17.0	14.7	12.3	10.9	9.8	8.96	8.47	4.61
1.80V/cell	96.9	74.2	55.9	46.8	29.1	22.0	18.0	15.4	12.9	11.4	10.3	9.42	8.85	4.80
1.75V/cell	108.9	81.6	60.4	50.1	30.9	23.2	18.9	16.0	13.3	11.8	10.6	9.7	9.00	4.90
1.70V/cell	117.3	87.4	64.1	53.0	32.7	24.2	19.5	16.5	13.8	12.2	10.9	10.0	9.23	4.96
1.67V/cell	122.1	90.8	66.4	55.0	33.6	24.9	20.0	16.8	14.0	12.3	11.1	10.1	9.34	5.01
1.60V/cell	132.3	97.2	71.3	58.4	34.9	25.9	20.7	17.4	14.4	12.6	11.3	10.3	9.53	5.08

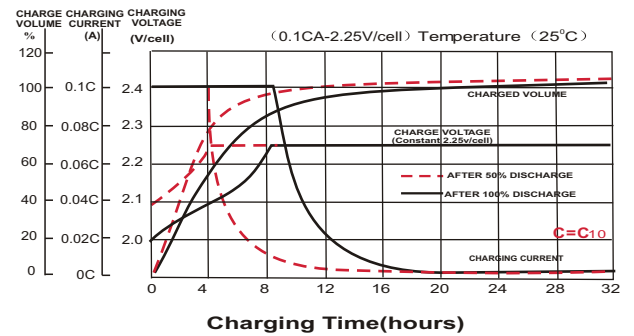
### Constant Power Discharge (Watts/cell) at 25 °C (77°F)

F.V/Time	20min	30min	45min	1h	2h	3h	4h	5h	6h	7h	8h	9h	10h	20h
1.85V/cell	161.9	128.0	98.2	82.6	52.6	40.2	33.4	28.9	24.3	21.6	19.5	17.8	16.9	9.20
1.80V/cell	183.0	141.6	107.5	90.7	56.6	42.9	35.3	30.3	25.4	22.5	20.4	18.7	17.6	9.57
1.75V/cell	203.4	154.4	115.4	96.5	59.8	45.2	36.8	31.4	26.3	23.3	21.0	19.3	17.9	9.75
1.70V/cell	216.8	163.9	121.7	101.6	63.1	46.9	37.9	32.3	27.1	24.0	21.6	19.7	18.3	9.86
1.67V/cell	223.1	168.5	125.1	104.8	64.4	48.2	38.7	32.8	27.5	24.3	21.9	20.0	18.5	9.95
1.60V/cell	239.1	178.7	133.4	110.7	66.7	49.9	40.1	33.8	28.1	24.7	22.2	20.3	18.9	10.1

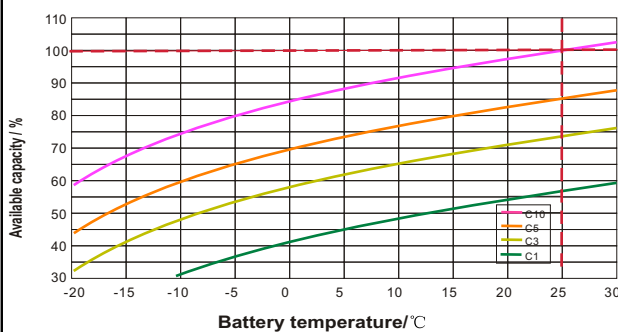
### Discharge Characteristics



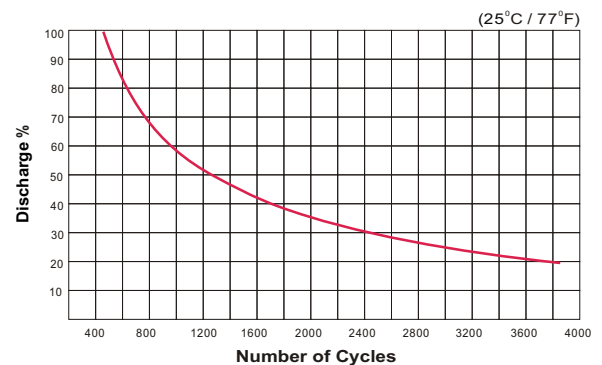
### Float Charging Characteristics



### Temperature Effects in Relation to Battery Capacity



### Cycle Life / Discharge Percentage



### Deep Cycle Gel Battery Features

- Ability to deeply discharge
- Maintenance-free
- Spill-free / Spill-proof
- Oxygen recombination technology
- Low self-discharge rate
- Excellent cycle life
- High power and volume ratio
- Unrivalled energy density
- Valve regulated
- Extremely safe operations
- VRLA Gel technology
- High reliability
- Rechargeable lead acid batteries
- Optimum quality
- Developed in Canada