

# CBG60-12

12V 60AH

Deep Cycle Gel Battery



## CBG60-12



## Physical Specification

|                               |                                  |
|-------------------------------|----------------------------------|
| Part Number:                  | <b>CBG60-12</b>                  |
| Length:                       | <b>325 ± 2 mm ( 12.8 inches)</b> |
| Width: Container              | <b>167 ± 2 mm ( 6.57 inches)</b> |
| Height:                       | <b>174 ± 2 mm ( 6.85 inches)</b> |
| Total Height (with terminal): | <b>174 ± 2 mm ( 6.85 inches)</b> |
| Approx Weight:                | <b>21.5 kg (47.4lbs)</b>         |

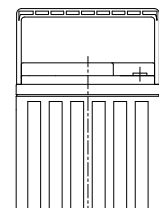
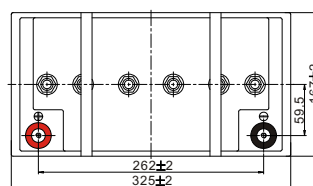
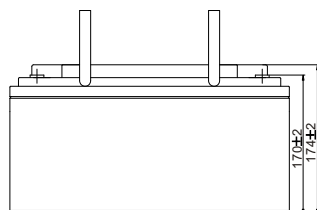
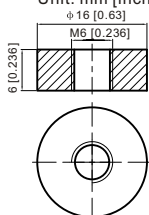
## Specifications

|                                     |  |  |
|-------------------------------------|--|--|
|                                     | Nominal Voltage  | 12V  |
|                                     | (C10, 1.80V/cell)  | 60AH   |
| <b>Terminal Option</b>              | T6   |  |
| <b>Container Material</b>           | Standard Option  | ABS  |
|                                     | Flame Retardant Option (FR)  | ABS (UL94:VO)  |
| <b>Rated Capacity</b>               | (20hr, 3.00A, 1.80V/cell)  | 60.0 Ah  |
|                                     | (10hr, 5.58A, 1.75V/cell)  | 55.8 Ah  |
|                                     | (5hr, 9.60A, 1.75V/cell)   | 48.0 Ah  |
|                                     | (3hr, 13.9A, 1.75V/cell)   | 41.7 Ah  |
|                                     | (1hr, 33.0A, 1.67V/cell)   | 33.0 Ah  |
| <b>Max Discharge Current (5s)</b>   | 600 A  |  |
| <b>Internal Resistance</b>          | Approx. 8.8mΩ  |  |
| <b>Discharge Characteristics</b>    | Operating Temp. Range  | Discharge: -20°C~55°C (-4°F~131°F)<br>Charge: 0°C~40°C (32°F~104°F)<br>Storage: -20°C~50°C (5°F~122°F) |
|                                     | Nominal Operating Temp. Range  | 25 ± 3°C (77 ± 5°F)  |
|                                     | Cycle Use  | Initial Charging Current less than 15A. Voltage 14.4V~15.0V at 25°C (77°F) Temp. Coefficient -30mV°C   |
| <b>Standby Use</b>                  | No limit on Initial Charging Current Voltage 13.5V~13.8V at 25°C (77°F) Temp. Coefficient -20mV°C  |  |
|                                     | Capacity affected by Temperature   | 40°C (104°F)      103%   |
|                                     |  | 25°C (77°F)      100%  |
|                                     |  | 0°C (32°F)      86%  |
| <b>Design Floating Life at 20°C</b> | 20 Years   |  |
| <b>Self Discharge</b>               | Canbat Deep Cycle Gel batteries may be stored for up to 9 months at 25°C (77°F) and then a refresh charge is required. For higher temperatures the time interval will be shorter. Self-discharge is less than 2% |  |

## Dimensions

### T6 Terminal

Unit: mm [inches]



To ensure safe and efficient operation always refer to the latest edition of our datasheets, as published on our website [www.canbat.com](http://www.canbat.com). Canbat Technologies Inc. All rights reserved. All trademarks are the property of their respective owners. All data subject to change without notice. E&O.E

# CBG60-12

12V 60AH

Deep Cycle Gel Battery



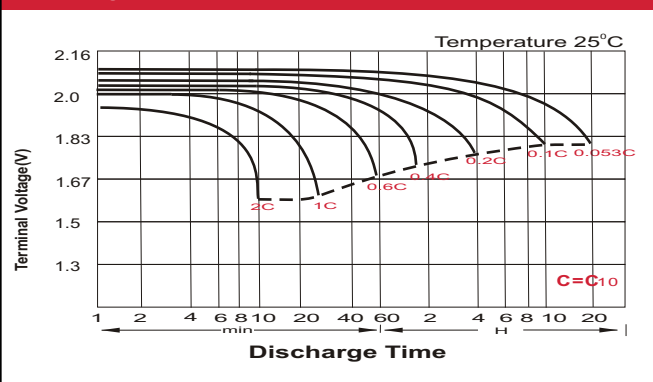
## Constant Current Discharge (Amperes) at 25 °C (77°F)

| F.V/Time   | 20min | 30min | 45min | 1h   | 2h   | 3h   | 4h   | 5h   | 6h   | 7h   | 8h   | 9h   | 10h  | 20h  |
|------------|-------|-------|-------|------|------|------|------|------|------|------|------|------|------|------|
| 1.85V/cell | 50.8  | 39.8  | 30.4  | 25.4 | 16.1 | 12.3 | 10.2 | 8.80 | 7.59 | 6.72 | 6.06 | 5.54 | 5.24 | 2.88 |
| 1.80V/cell | 58.1  | 44.5  | 33.5  | 28.1 | 17.5 | 13.2 | 10.8 | 9.24 | 7.97 | 7.04 | 6.35 | 5.83 | 5.47 | 3.00 |
| 1.75V/cell | 65.3  | 49.0  | 36.2  | 30.1 | 18.5 | 13.9 | 11.3 | 9.60 | 8.25 | 7.29 | 6.56 | 6.00 | 5.58 | 3.06 |
| 1.70V/cell | 70.4  | 52.4  | 38.5  | 31.8 | 19.6 | 14.5 | 11.7 | 9.90 | 8.54 | 7.53 | 6.75 | 6.16 | 5.71 | 3.10 |
| 1.67V/cell | 73.3  | 54.5  | 39.8  | 33.0 | 20.1 | 15.0 | 12.0 | 10.1 | 8.68 | 7.64 | 6.86 | 6.24 | 5.78 | 3.13 |
| 1.60V/cell | 79.4  | 58.3  | 42.8  | 35.0 | 20.9 | 15.6 | 12.4 | 10.4 | 8.89 | 7.80 | 6.98 | 6.37 | 5.89 | 3.17 |

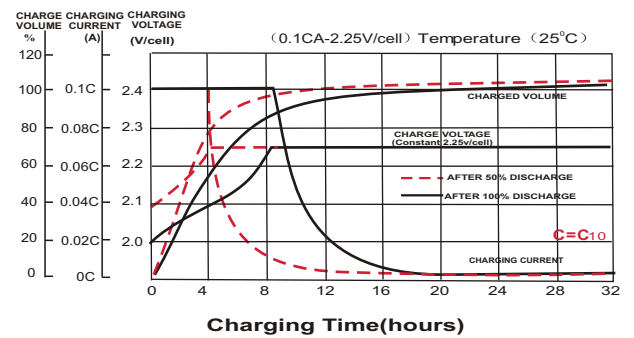
## Constant Power Discharge (Watts/cell) at 25 °C (77°F)

| F.V/Time   | 20min | 30min | 45min | 1h   | 2h   | 3h   | 4h   | 5h   | 6h   | 7h   | 8h   | 9h   | 10h  | 20h  |
|------------|-------|-------|-------|------|------|------|------|------|------|------|------|------|------|------|
| 1.85V/cell | 97.2  | 76.8  | 58.9  | 49.5 | 31.5 | 24.1 | 20.0 | 17.4 | 15.0 | 13.3 | 12.1 | 11.0 | 10.4 | 5.75 |
| 1.80V/cell | 109.8 | 85.0  | 64.5  | 54.4 | 34.0 | 25.7 | 21.2 | 18.2 | 15.7 | 13.9 | 12.6 | 11.6 | 10.9 | 5.98 |
| 1.75V/cell | 122.1 | 92.6  | 69.3  | 57.9 | 35.9 | 27.1 | 22.1 | 18.8 | 16.2 | 14.4 | 13.0 | 11.9 | 11.1 | 6.09 |
| 1.70V/cell | 130.1 | 98.3  | 73.0  | 60.9 | 37.9 | 28.2 | 22.8 | 19.4 | 16.8 | 14.8 | 13.3 | 12.2 | 11.3 | 6.16 |
| 1.67V/cell | 133.8 | 101.1 | 75.1  | 62.9 | 38.6 | 28.9 | 23.2 | 19.7 | 17.0 | 15.0 | 13.5 | 12.3 | 11.5 | 6.22 |
| 1.60V/cell | 143.4 | 107.2 | 80.0  | 66.4 | 40.0 | 30.0 | 24.0 | 20.3 | 17.4 | 15.3 | 13.7 | 12.6 | 11.7 | 6.30 |

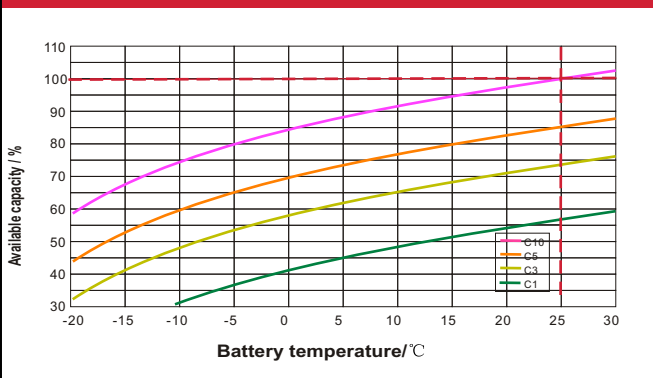
### Discharge Characteristics



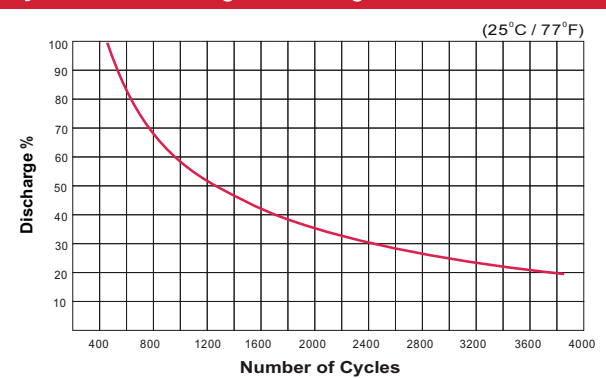
### Float Charging Characteristics



### Temperature Effects in Relation to Battery Capacity



### Cycle Life / Discharge Percentage



### Deep Cycle Gel Battery Features

- Ability to deeply discharge
- Maintenance-free
- Spill-free / Spill-proof
- Oxygen recombination technology
- Low self-discharge rate
- Excellent cycle life
- High power and volume ratio
- Unrivalled energy density
- Valve regulated
- Extremely safe operations
- VRLA Gel technology
- High reliability
- Rechargeable lead acid batteries
- Optimum quality
- Developed in Canada

To ensure safe and efficient operation always refer to the latest edition of our datasheets, as published on our website [www.canbat.com](http://www.canbat.com). Canbat Technologies Inc. All rights reserved. All trademarks are the property of their respective owners. All data subject to change without notice. E&O.E