

# CBG2000-2

2V 2000AH

Deep Cycle Gel Battery



## CBG2000-2



## Physical Specification

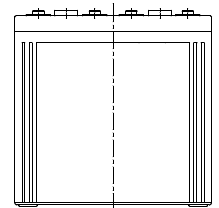
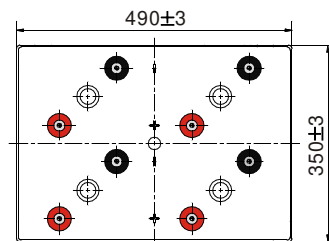
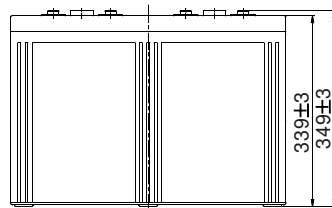
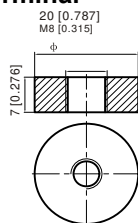
Part Number:	<b>CBG2000-2</b>
Length:	<b>490 ± 2 mm ( 19.29 inches)</b>
Width: Container	<b>350 ± 2 mm ( 13.78 inches)</b>
Height:	<b>339 ± 2 mm ( 13.35 inches)</b>
Total Height (with terminal):	<b>349 ± 2 mm ( 13.74 inches)</b>
Approx Weight:	<b>132.5 kg (292.2lbs)</b>

## Specifications

	Nominal Voltage	2V	
	(C10, 1.80V/cell)	2000AH	
<b>Terminal Option</b>	T11		
<b>Container Material</b>	Standard Option	ABS	
	Flame Retardant Option (FR)	ABS (UL94:VO)	
<b>Rated Capacity</b>	(20hr, 106.67A, 1.80V/cell)	2133.4 Ah	
	(10hr, 200.0A, 1.75V/cell)	2000.0 Ah	
	(5hr, 344.0A, 1.75V/cell)	1720.0 Ah	
	(3hr, 498.7A, 1.75V/cell)	1496.1 Ah	
	(1hr, 11730.0A, 1.67V/cell)	1173.0 Ah	
<b>Max Discharge Current (5s)</b>	14000A		
<b>Internal Resistance</b>	Approx. 0.34mΩ		
<b>Discharge Characteristics</b>	Operating Temp. Range	Discharge: -20°C~55°C (-4°F~131°F)	
		Charge: 0°C~40°C (32°F~104°F)	
		Storage: -20°C~50°C (5°F~122°F)	
	Nominal Operating Temp. Range	25 ± 3°C (77 ± 5°F)	
	Cycle Use	Initial Charging Current less than 500.0A. Voltage 2.4V~2.5V at 25°C (77°F) Temp. Coefficient -5mV/°C	
	Standby Use	No limit on Initial Charging Current Voltage 2.25V~2.3V at 25°C (77°F) Temp. Coefficient -3mV/°C	
	Capacity affected by Temperature	40°C (104°F)	103%
		25°C (77°F)	100%
0°C (32°F)		86%	
<b>Design Floating Life at 20°C</b>	20 Years		
<b>Self Discharge</b>	Canbat Deep Cycle Gel batteries may be stored for up to 9 months at 25°C (77°F) and then a refresh charge is required. For higher temperatures the time interval will be shorter. Self-discharge is less than 2%		

## Dimensions

### T11 Terminal



To ensure safe and efficient operation always refer to the latest edition of our datasheets, as published on our website [www.canbat.com](http://www.canbat.com). Canbat Technologies Inc. All rights reserved. All trademarks are the property of their respective owners. All data subject to change without notice. E&O.E

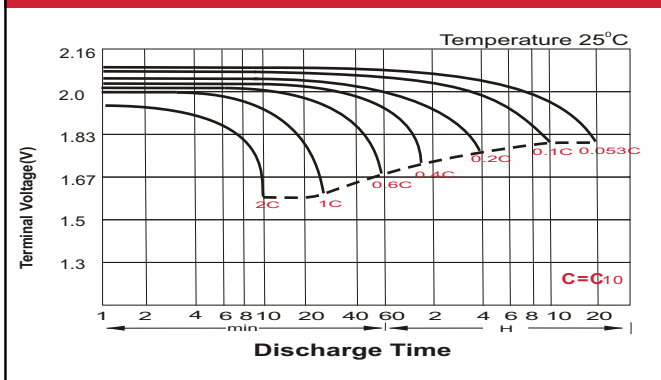
### Constant Current Discharge (Amperes) at 25 °C (77°F)

F.V/Time	20min	30min	45min	1h	2h	3h	4h	5h	6h	7h	8h	9h	10h	20h
1.85V/cell	1740.0	1368.0	1042.7	906.0	578.0	440.7	365.0	315.2	272.0	240.9	217.3	198.4	187.8	102.4
1.80V/cell	/	1528.0	1152.0	1000.0	626.0	472.0	387.0	331.2	285.7	252.0	227.8	208.9	196.2	106.67
1.75V/cell	/	1680.0	1242.7	1068.0	663.0	498.7	405.5	344.0	295.7	261.1	235.0	215.1	200.0	108.8
1.70V/cell	/	1800.0	1320.0	1132.0	703.0	519.3	418.5	354.4	306.0	269.7	242.0	220.7	204.8	110.3
1.67V/cell	/	1872.0	1368.0	1173.0	721.0	536.0	429.0	362.0	311.0	273.7	245.5	223.8	207.2	111.3
1.60V/cell	/	/	1469.3	1246.0	750.0	557.3	445.0	373.2	318.7	279.4	250.0	228.4	211.2	112.9

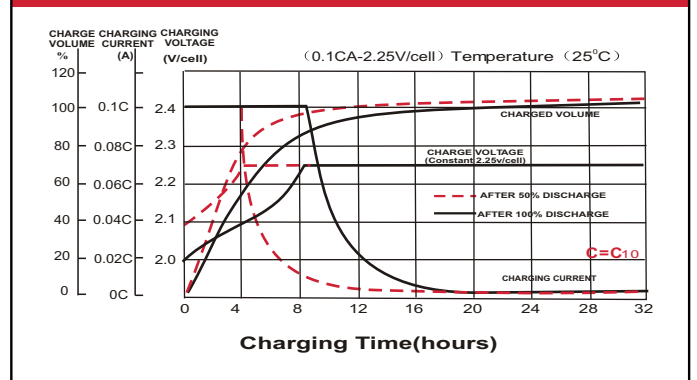
### Constant Power Discharge (Watts) at 25 °C (77°F)

F.V/Time	20min	30min	45min	1h	2h	3h	4h	5h	6h	7h	8h	9h	10h	20h
1.85V/cell	3304.3	2615.6	2006.1	1750.4	1120.7	856.7	712.5	617.5	534.8	474.7	429.1	392.3	371.7	202.9
1.80V/cell	/	2894.0	2195.7	1922.0	1207.6	914.3	752.3	646.5	559.6	494.9	448.4	411.9	387.5	211.0
1.75V/cell	/	3146.6	2347.4	2042.0	1275.6	963.9	785.9	668.4	577.1	511.6	461.8	423.8	394.6	215.0
1.70V/cell	/	3348.0	2484.2	2156.5	1346.2	1000.8	809.0	687.2	596.4	527.6	474.8	434.3	403.7	217.7
1.67V/cell	/	3435.1	2551.3	2217.0	1373.5	1028.6	826.7	699.4	604.3	533.7	480.4	439.3	407.8	219.5
1.60V/cell	/	/	2725.6	2342.5	1422.0	1064.5	854.8	718.8	617.3	543.5	488.3	447.8	415.0	222.3

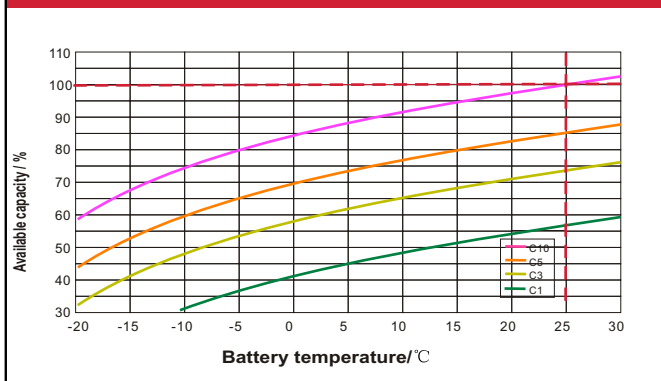
### Discharge Characteristics



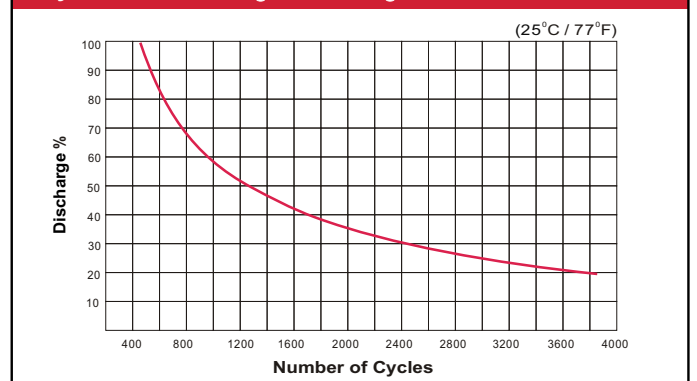
### Float Charging Characteristics



### Temperature Effects in Relation to Battery Capacity



### Cycle Life / Discharge Percentage



### Deep Cycle Gel Battery Features

- Ability to deeply discharge
- Maintenance-free
- Spill-free / Spill-proof
- Oxygen recombination technology
- Low self-discharge rate
- Excellent cycle life
- High power and volume ratio
- Unrivalled energy density
- Valve regulated
- Extremely safe operations
- VRLA Gel technology
- High reliability
- Rechargeable lead acid batteries
- Optimum quality
- Developed in Canada

To ensure safe and efficient operation always refer to the latest edition of our datasheets, as published on our website [www.canbat.com](http://www.canbat.com). Canbat Technologies Inc. All rights reserved. All trademarks are the property of their respective owners. All data subject to change without notice. E&O.E