

# CBG200-2

2V 200AH

Deep Cycle Gel Battery



## CBG200-2



## Physical Specification

Part Number:	<b>CBG200-2</b>
Length:	<b>170 ± 2 mm ( 6.69 inches)</b>
Width: Container	<b>110 ± 2 mm ( 4.33 inches)</b>
Height:	<b>328 ± 2 mm ( 12.91 inches)</b>
Total Height (with terminal):	<b>337 ± 2 mm ( 13.27 inches)</b>
Approx Weight:	<b>13.7 kg (30.21lbs)</b>

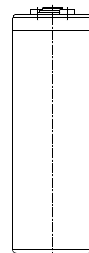
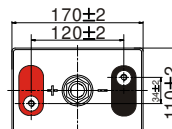
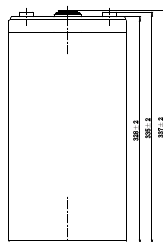
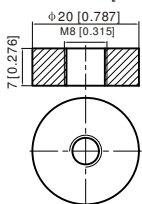
## Specifications

	Nominal Voltage	2V	
	(C10, 1.80V/cell)	200AH	
<b>Terminal Option</b>	T11		
<b>Container Material</b>	Standard Option	ABS	
	Flame Retardant Option (FR)	ABS (UL94:VO)	
<b>Rated Capacity</b>	(20hr, 10.7A, 1.80V/cell)	214.0 Ah	
	(10hr, 20.0A, 1.75V/cell)	200.0 Ah	
	(5hr, 34.4A, 1.75V/cell)	172.0 Ah	
	(3hr, 49.9A, 1.75V/cell)	149.7 Ah	
	(1hr, 117.3A, 1.67V/cell)	117.3 Ah	
<b>Max Discharge Current (5s)</b>	1400A		
<b>Internal Resistance</b>	Approx. 1.2mΩ		
<b>Discharge Characteristics</b>	Operating Temp. Range	Discharge: -20°C~55°C (-4°F~131°F)	
		Charge: 0°C~40°C (32°F~104°F)	
		Storage: -20°C~50°C (5°F~122°F)	
	Nominal Operating Temp. Range	25 ± 3°C (77 ± 5°F)	
	Cycle Use	Initial Charging Current less than 50.0A. Voltage 2.4V~2.5V at 25°C (77°F) Temp. Coefficient -5mV/°C	
	Standby Use	No limit on Initial Charging Current Voltage 2.25V~2.3V at 25°C (77°F) Temp. Coefficient -3mV/°C	
	Capacity affected by Temperature	40°C (104°F)	103%
		25°C (77°F)	100%
0°C (32°F)		86%	
<b>Design Floating Life at 20°C</b>	20 Years		
<b>Self Discharge</b>	Canbat Deep Cycle Gel batteries may be stored for up to 9 months at 25°C (77°F) and then a refresh charge is required. For higher temperatures the time interval will be shorter. Self-discharge is less than 2%		

## Dimensions

### T11 Terminal

Unit: mm [inches]



To ensure safe and efficient operation always refer to the latest edition of our datasheets, as published on our website [www.canbat.com](http://www.canbat.com). Canbat Technologies Inc. All rights reserved. All trademarks are the property of their respective owners. All data subject to change without notice. E&O.E

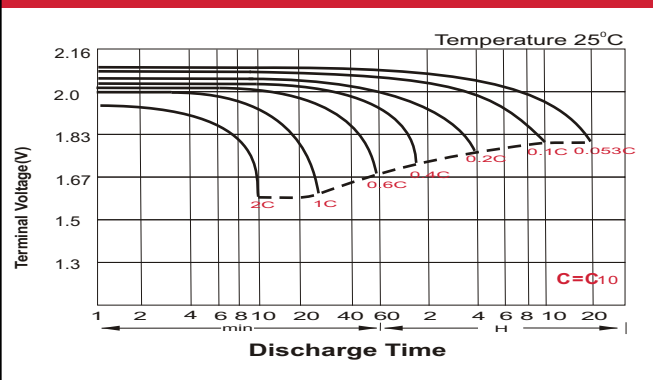
### Constant Current Discharge (Amperes) at 25 °C (77°F)

F.V/Time	20min	30min	45min	1h	2h	3h	4h	5h	6h	7h	8h	9h	10h	20h
1.85V/cell	174.0	136.8	104.3	90.6	57.8	44.1	36.5	31.5	27.2	24.1	21.7	19.8	18.8	10.2
1.80V/cell	199.8	152.8	115.2	100.0	62.6	47.2	38.7	33.1	28.6	25.2	22.8	20.9	19.6	10.7
1.75V/cell	224.4	168.0	124.3	106.8	66.3	49.9	40.6	34.4	29.6	26.1	23.5	21.5	20.0	10.9
1.70V/cell	241.8	180.0	132.0	113.2	70.3	51.9	41.9	35.4	30.6	27.0	24.2	22.1	20.5	11.1
1.67V/cell	251.4	187.2	136.8	117.3	72.1	53.6	42.9	36.2	31.1	27.4	24.6	22.4	20.7	11.2
1.60V/cell	272.4	200.0	146.9	124.6	75.0	55.7	44.5	37.3	31.9	27.9	25.0	22.8	21.1	11.4

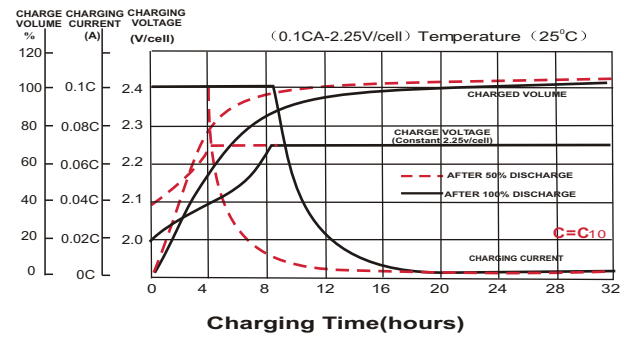
### Constant Power Discharge (Watts) at 25 °C (77°F)

F.V/Time	20min	30min	45min	1h	2h	3h	4h	5h	6h	7h	8h	9h	10h	20h
1.85V/cell	330.4	261.6	200.6	175.0	112.1	85.7	71.2	61.7	53.5	47.5	42.9	39.2	37.2	20.3
1.80V/cell	374.4	289.4	219.6	192.2	120.8	91.4	75.2	64.7	56.0	49.5	44.8	41.2	38.7	21.1
1.75V/cell	415.8	314.7	234.7	204.2	127.6	96.4	78.6	66.8	57.7	51.2	46.2	42.4	39.5	21.5
1.70V/cell	443.2	334.8	248.4	215.6	134.6	100.1	80.9	68.7	59.6	52.8	47.5	43.4	40.4	21.8
1.67V/cell	455.5	343.5	255.1	221.7	137.4	102.9	82.7	69.9	60.4	53.4	48.0	43.9	40.8	21.9
1.60V/cell	488.1	364.6	272.6	234.2	142.2	106.5	85.5	71.9	61.7	54.3	48.8	44.8	41.5	22.2

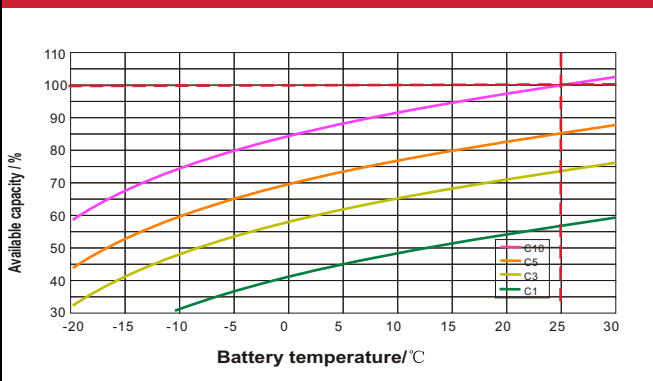
### Discharge Characteristics



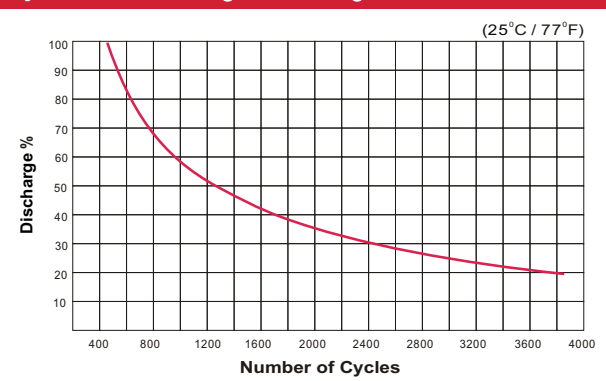
### Float Charging Characteristics



### Temperature Effects in Relation to Battery Capacity



### Cycle Life / Discharge Percentage



### Deep Cycle Gel Battery Features

- Ability to deeply discharge
- Excellent cycle life
- VRLA Gel technology
- Maintenance-free
- High power and volume ratio
- High reliability
- Spill-free / Spill-proof
- Unrivalled energy density
- Rechargeable lead acid batteries
- Oxygen recombination technology
- Valve regulated
- Optimum quality
- Low self-discharge rate
- Extremely safe operations
- Developed in Canada